

Introductory Presentation

Law Enforcement Action Partnership: City of Wilmington

Major Mike Hilliard (Ret.)

Lionel King, Ph.D.

Who is LEAP?

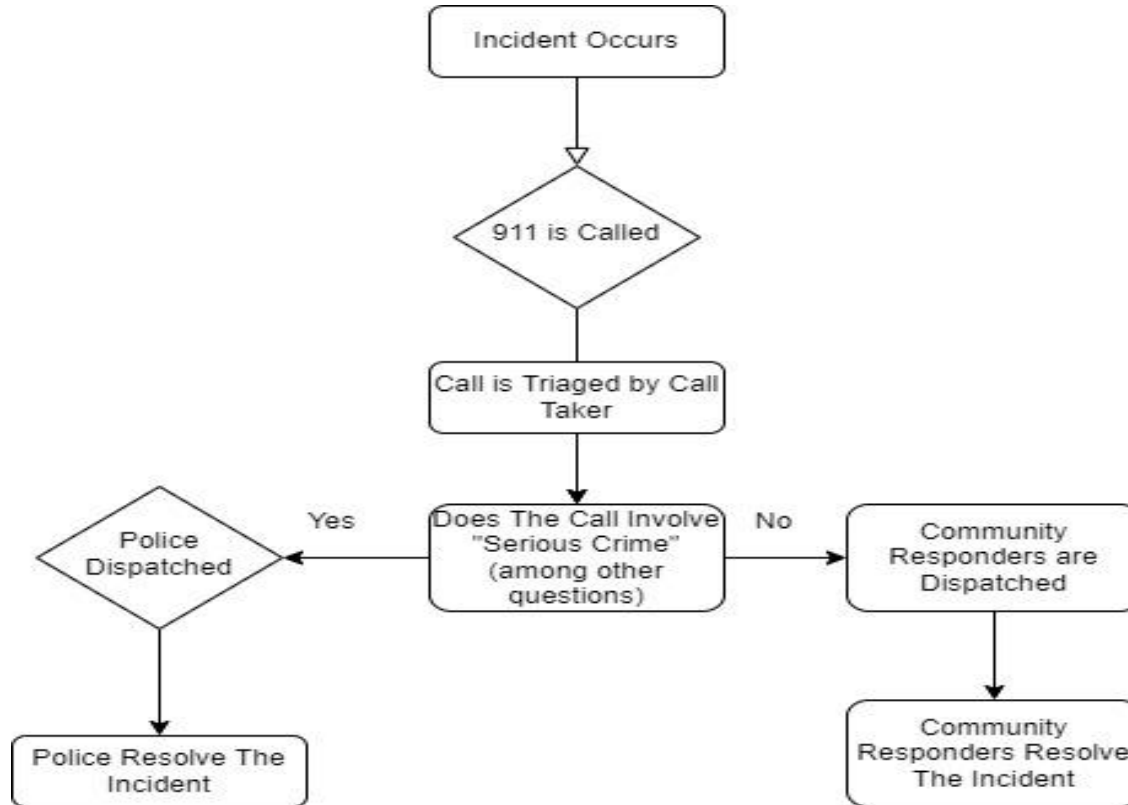


LAW ENFORCEMENT ACTION PARTNERSHIP

ADVANCING JUSTICE AND PUBLIC SAFETY SOLUTIONS



What is a community responder program?



Where is it being done already?

- ❖ CAHOOTS- Eugene
- ❖ CRU- Olympia
- ❖ STAR- Denver
- ❖ ACS- Albuquerque
- ❖ SCRT- San Francisco
- ❖ EMCOT- Austin
- ❖ PIC- Rochester
- ❖ CRESS- Amherst
- ❖ MRU- Dayton
- ❖ CCD- Durham
- ❖ 911 Diversion- Louisville
- ❖ B-HEARD- New York City



Call Analysis Comparison

| Common Citizen-Initiated Call Types | Evanston | Amherst | Dayton | Brooklyn Center |
|--|-----------------|----------------|---------------|------------------------|
| Check Well Being | 2 | 4 | 3 | 1 |
| Nuisance/Noise Complaint | 3 | 5 | 22 | 38 |
| Disturbance/Disorderly Conduct | 7 | 8 | 4 | 13 |
| Suspicious Incident/Person/Vehicle | 9 | 2 | 1 | 6 |
| Animal Complaint | 10 | 11 | 21 | 9 |

What exactly does LEAP do?

❖ **Phase 1: Needs assessment**

- Analyze 911 call data
- Learn about existing city processes, programs
- Compare to other cities with community responder programs

❖ **Phase 2: Community- and stakeholder-led design**


- Equip community members and stakeholders to make informed decisions about program design
 - Plan agendas on key topics: call types, 911 dispatch process, hours, budget, referral services, implementation timeline
 - Provide materials e.g. call samples to review

❖ **Phase 3: Implementation**

- Provide ongoing advice as program manager leads implementation



Phase 1: Needs Assessment in Wilmington

- ❖ Conduct a calls-for-service data analysis.
 - ❖ Meet with police, dispatch, fire, Mobile Crisis Team, community members, and other stakeholders to understand current city practices, needs, and concerns.
 - ❖ Brief stakeholders on expanded response programs and community-led design processes in other jurisdictions.
 - ❖ Use the latest information on existing expanded response programs across the country to identify key process and design choices relevant to Wilmington.
 - ❖ Present needs assessment related to expanded response options
- 

Phase 2: Community-led design in Wilmington

- ❖ Provide detailed agendas and practical materials for stakeholder meetings, meet with stakeholder group chairs to prepare them to facilitate meetings, and present key content virtually at meetings.
- ❖ Answer questions for and incorporate feedback from community and city stakeholders.
- ❖ Help shape community- and stakeholder-led recommendations into detailed, implementable action steps for consideration by the council



Questions?

Maj. Mike Hilliard (Ret.) - Mike.Hilliard@lawenforcementaction.org
Lionel King, Ph.D. - Lionel@lawenforcementaction.org

